

The background of the entire image is a composite of a Nashville skyline at sunset and a large, semi-transparent acoustic guitar. The skyline features the AT&T Building and other downtown structures. The guitar is positioned diagonally across the frame. The text is contained within a white rectangular border with a distressed, hand-painted appearance.

★ NASHVILLE, TN ★

BEC

CONFERENCE

★ MARCH 1-3, 2020 ★

NGA

NATIONAL GLASS ASSOCIATION with GANA

Navigating the Technology Landscape



Nick Bagatelos
*Bagatelos Architectural
Systems*



David Bailey
Hastings Architecture



James Smith
*Consolidated
Glass Holdings*



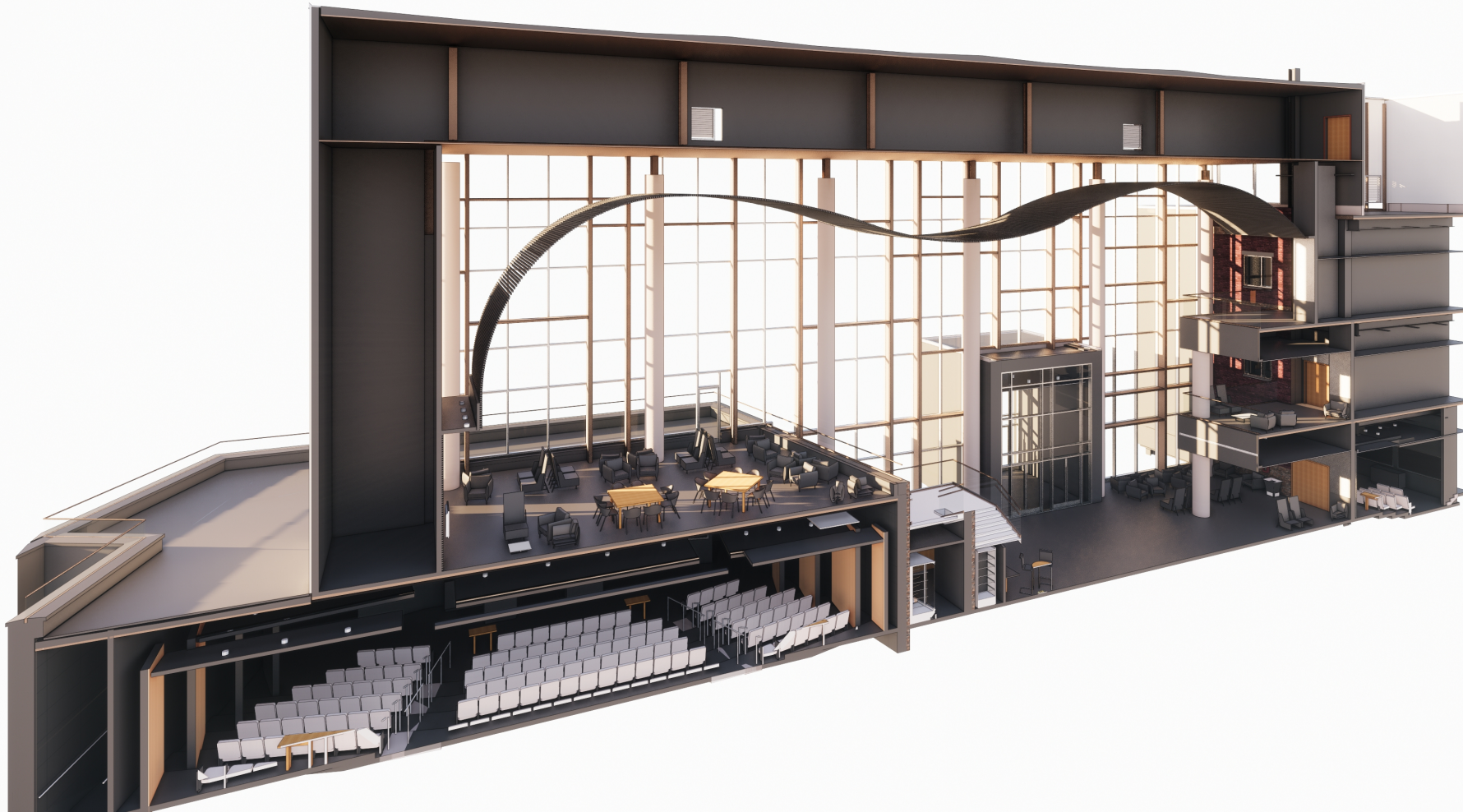
Max Perilstein
*Sole Source
Consultants*

Session Objectives

- Discuss the evolution of technology and alternate project approaches with a focus on current and growing technologies that exist.
- Describe how these growing technologies and approaches can help push glaziers to a new level of productivity and professionalism.
- List some of the misunderstandings and misconceptions of the technologies currently in use.
- Inform ways to mitigate the potential challenges of implementing new technology into daily glazing business.

Technology Evolution

- Discuss the evolution of technology and alternate project approaches with a focus on current and growing technologies that exist.



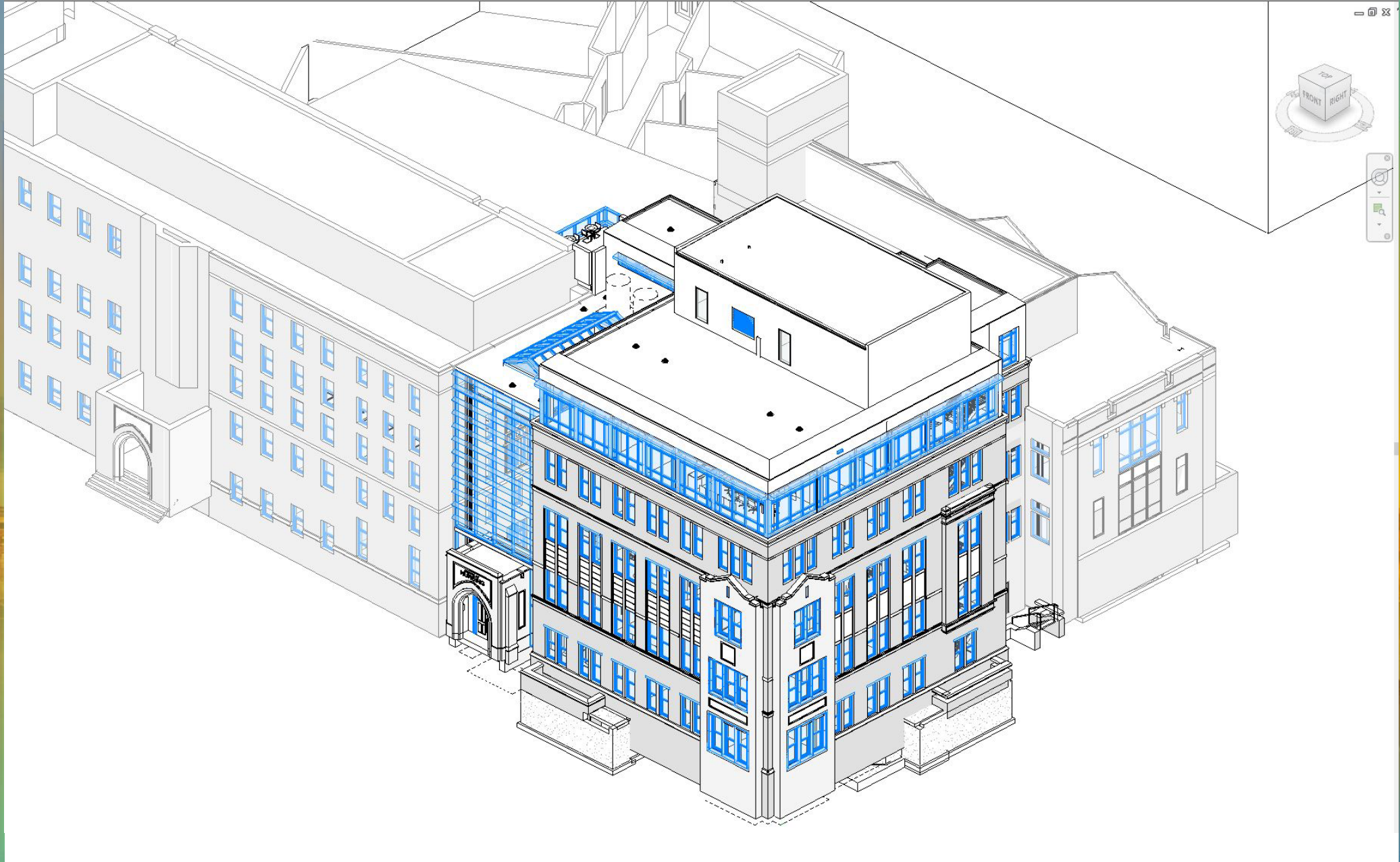
BUILDING ENVELOPE CONTRACTORS CONFERENCE 2020

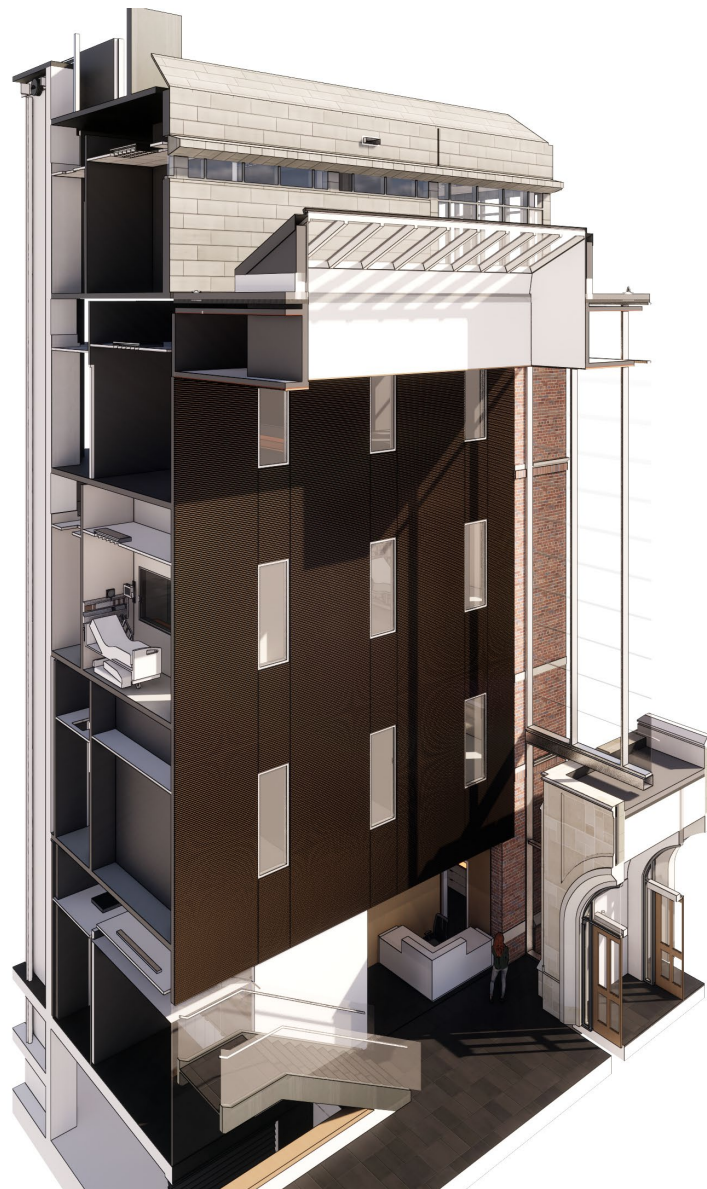
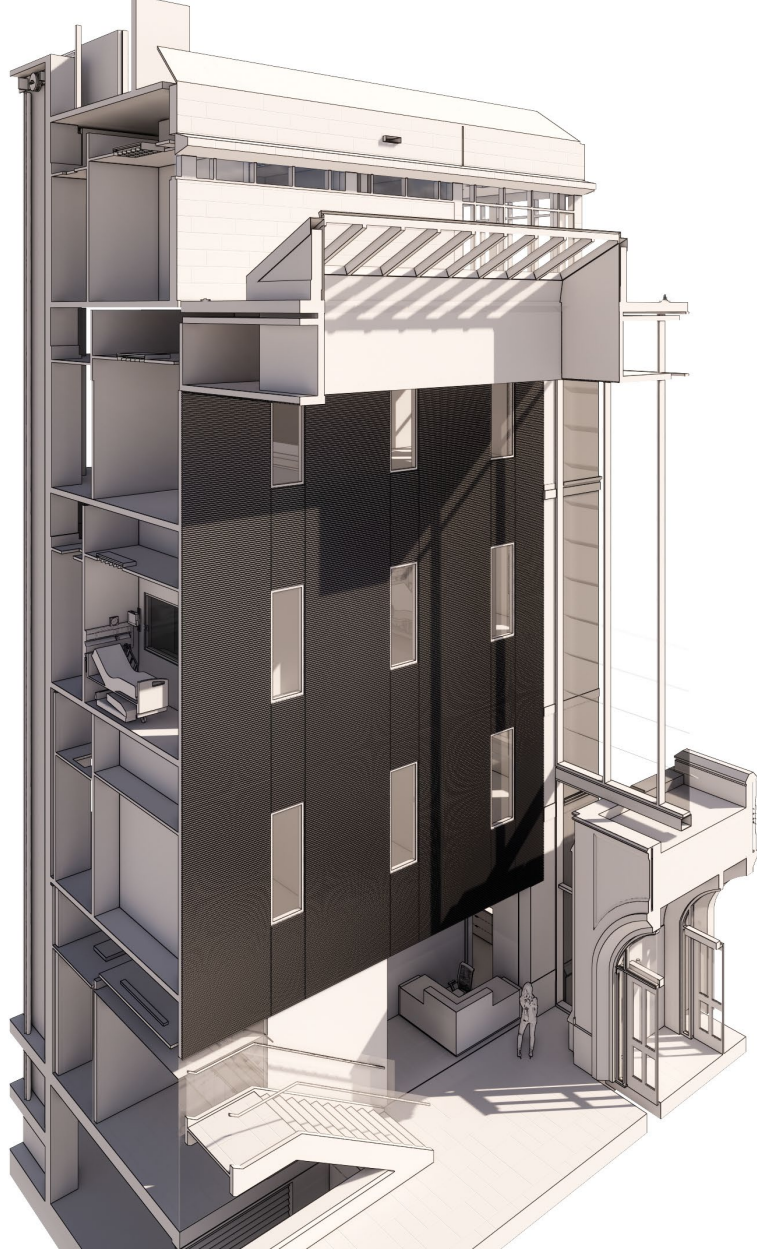




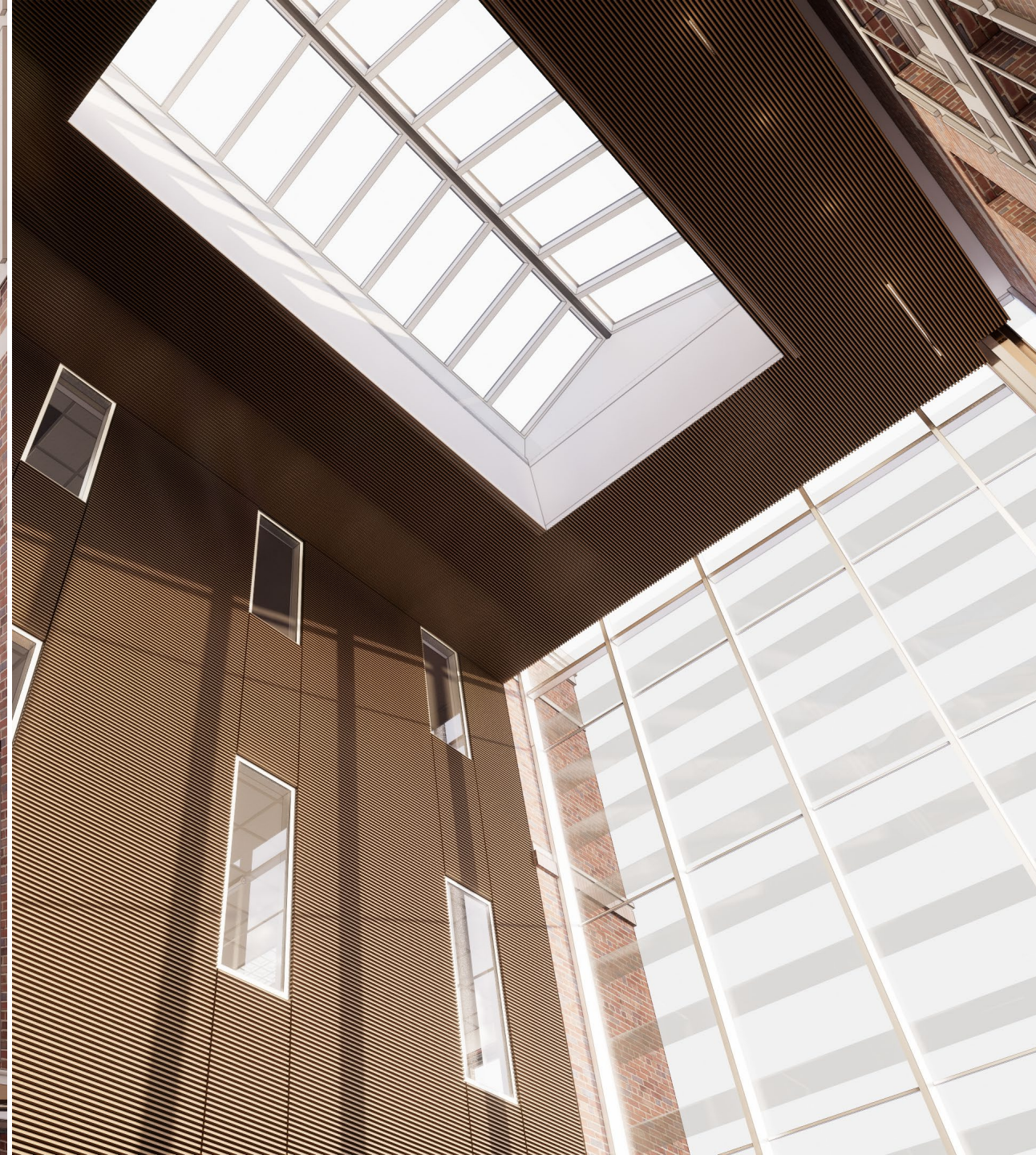
BUILDING ENVELOPE CONTRACTORS CONFERENCE 2020









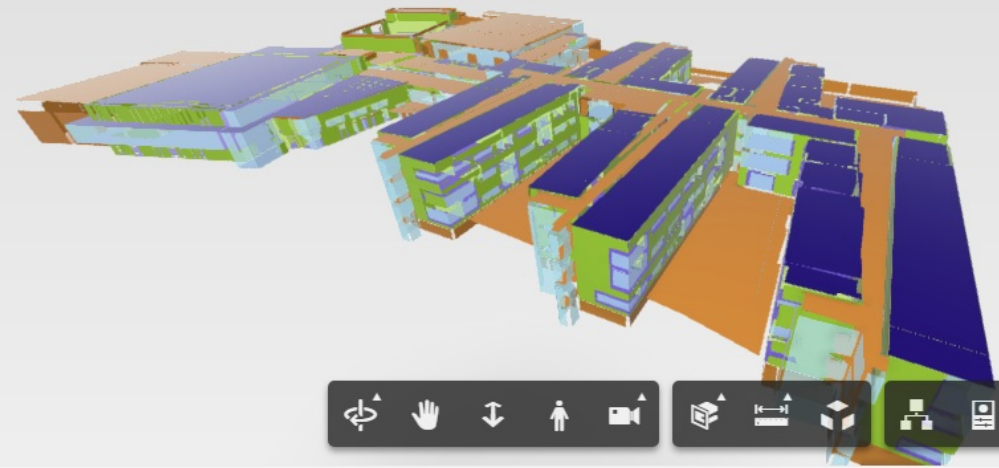
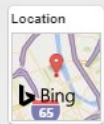




Building Form



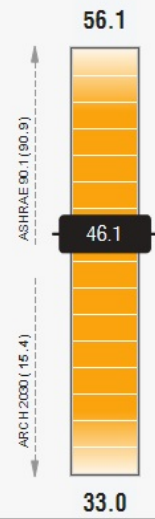
46.1
kBtu / ft² / yr



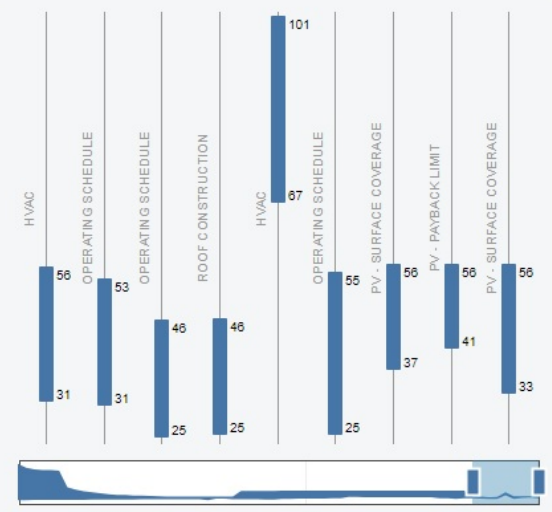
RIGHT



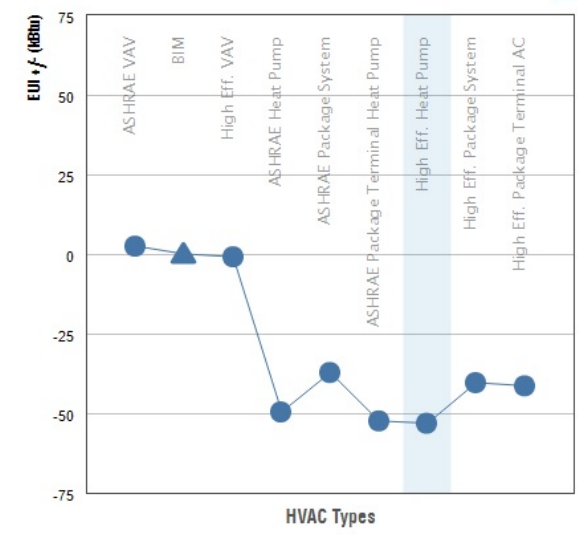
Benchmark Comparison kBtu / ft² / yr



Model History kBtu / ft² / yr



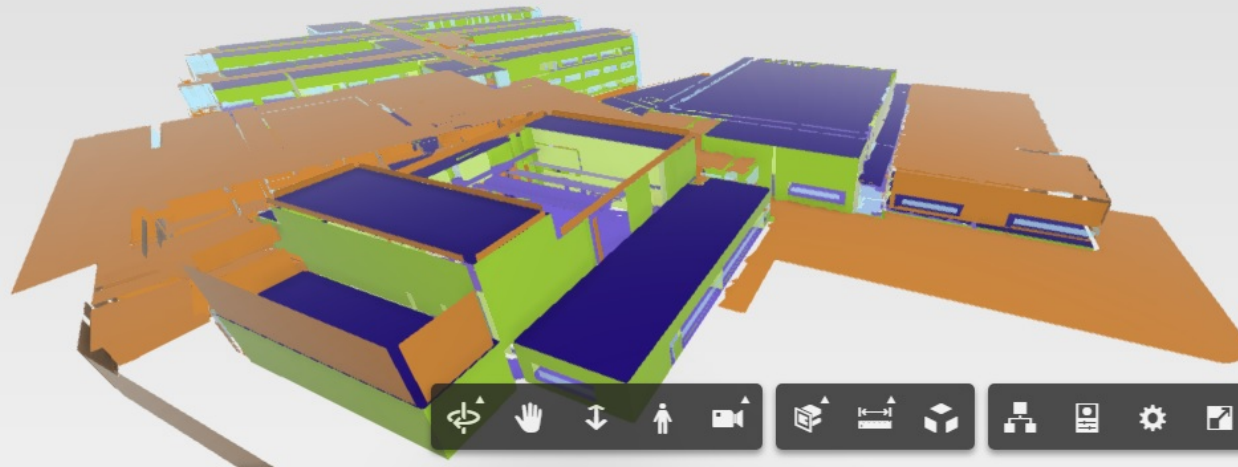
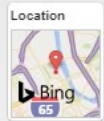
HVAC



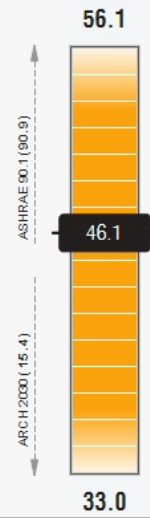
Building Form



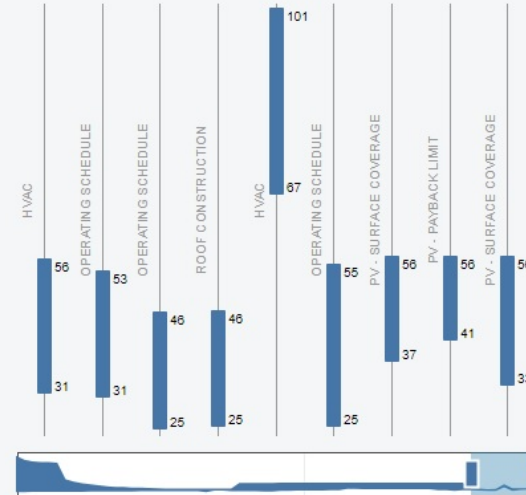
46.1
kBtu / ft² / yr



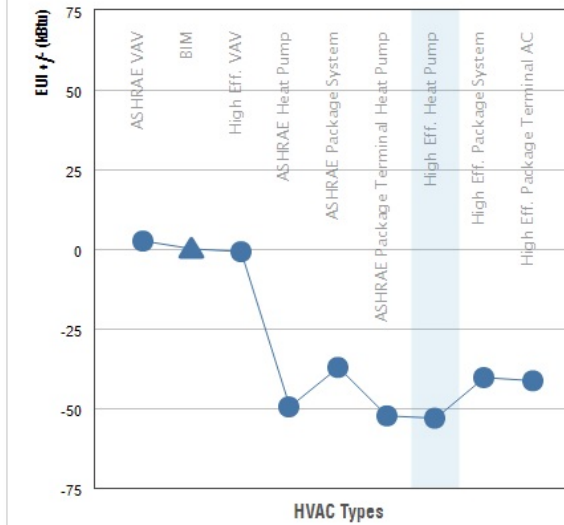
Benchmark Comparison kBtu / ft² / yr

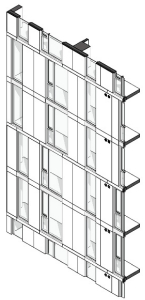
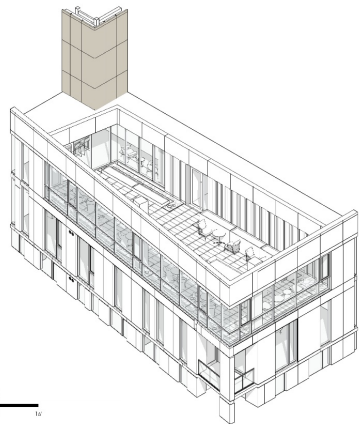


Model History kBtu / ft² / yr



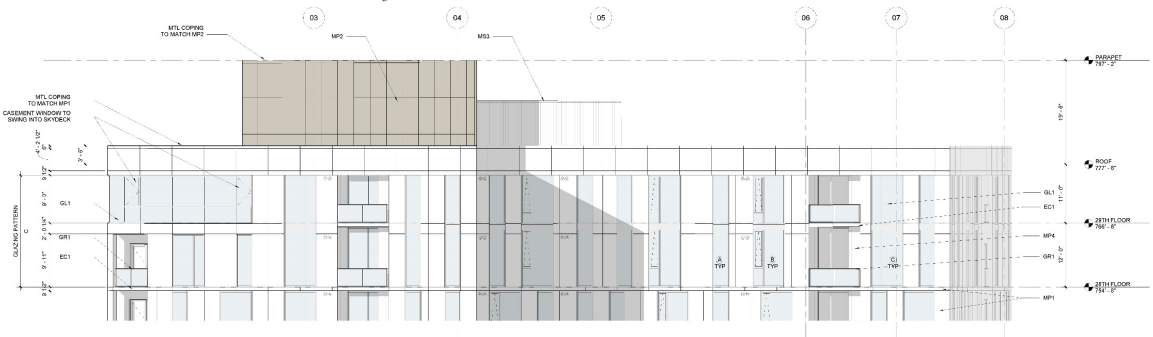
HVAC



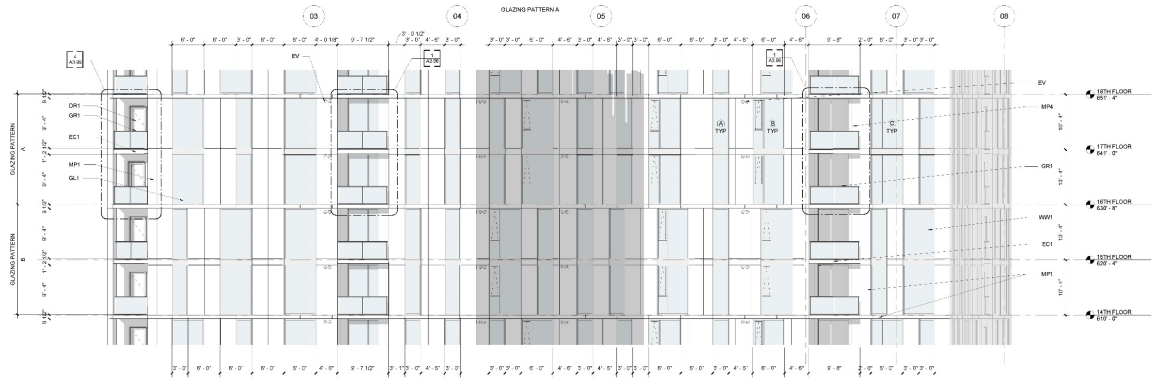


4 AXON - SKY DECK

3 AXON - WEST TOWER FACADE



2 ENLARGED ELEV - WEST UPPER



1 ENLARGED ELEV - WEST TYP FLOORS

GENERAL WINDOW NOTES:

- TEMPERED GLASS. PROVIDE PER IRC AND IBC.
- TYPICAL WINDOW WALL SHALL BE 34" ABOVE TO SLAB, UNLESS NOTED OTHERWISE. TYPICAL WINDOW WALL HEAD TO BE 34" BELOW TO SLAB, UNLESS NOTED OTHERWISE.
- GLAZING IN EXTERIOR DOORS.
- GLAZING IN AN INDIVIDUAL FIXED OR OPERABLE PANEL ADJACENT TO A DOOR WHERE THE NEAREST EXPOSED EDGE OF THE GLAZING IS WITHIN A 36" PLANE OF THE DOOR. THE BOTTOM EXPOSED EDGE OF GLAZING IS LESS THAN 10" ABOVE THE FINISH SURFACE.
- TYPICAL PANEL SPACING SHOWN. ADJUST AT WINDOW OPENINGS AS SHOWN.

EXTERIOR MATERIALS LEGEND

- BR1 BRICK VENEER. BASES OF DESIGN CLOUD CERAMIC MEMENTO. 6" NOMINAL SIZE.
- BR2 BRICK VENEER. BASES OF DESIGN CLOUD CERAMIC MEMENTO. 6" NOMINAL SIZE.
- CMU1 CMU 8" (20) COLOR TIED BY ARCHITECT.
- CMU2 THERMALLY BROKEN ALUMINUM CURTAIN WALL SYSTEM. BASES OF DESIGN HANOVER. GLAZING. 600" x 600". STRUCTURALLY GLAZED BALCONY ASSEMBLY 2-1/2" x 6".
- DR1 YTD 301 THERMALLY BROKEN TERRACE DOOR @ BALCONIES. PAINTED TO MATCH BUILDING.
- EC1 EXPOSED CONCRETE.
- EV1 RESIDENTIAL EXHAUST VENT. BASES OF DESIGN HANOVER. GLAZING. 600" x 600". STRUCTURALLY GLAZED BALCONY ASSEMBLY 2-1/2" x 6".
- GL1 1" INSULATED LOW E VISION GLASS. BASES OF DESIGN GLAZING. 600" x 600". ON CRYSTAL GREY OR APPLIED.
- GL2 1" INSULATED ULTRACLEAR LOW E VISION GLASS. BASES OF DESIGN GLAZING. 600" x 600". ON CRYSTAL GREY OR APPLIED.
- GL3 1" INSULATED LOW E VISION GLASS. BASES OF DESIGN GLAZING. 600" x 600". ON CRYSTAL GREY OR APPLIED.
- GR1 STAINLESS STEEL RAILING WITH CLEAR TEMPERED GLASS.
- LS1 LAMINATE. SEE DETAIL.
- LS2 METAL LOUVER BASES OF DESIGN HANOVER. 600" x 600". STRUCTURALLY GLAZED BALCONY ASSEMBLY 2-1/2" x 6".
- MP1 SINGLE BURN 300 ALUM PLATE PANEL SYSTEM WITH MATCHING INTERNAL COPING.
- MP2 BASES OF DESIGN HANOVER. 600" x 600". STRUCTURALLY GLAZED BALCONY ASSEMBLY 2-1/2" x 6".
- MP3 SINGLE BURN 300 ALUM PLATE PANEL SYSTEM WITH MATCHING INTERNAL COPING.
- MP4 BASES OF DESIGN HANOVER. 600" x 600". STRUCTURALLY GLAZED BALCONY ASSEMBLY 2-1/2" x 6".
- MP5 SINGLE BURN 300 ALUM PLATE PANEL SYSTEM WITH MATCHING INTERNAL COPING.
- MP6 SINGLE BURN 300 ALUM PLATE PANEL SYSTEM WITH MATCHING INTERNAL COPING.
- MP7 SINGLE BURN 300 ALUM PLATE PANEL SYSTEM WITH MATCHING INTERNAL COPING.
- MP8 SINGLE BURN 300 ALUM PLATE PANEL SYSTEM WITH MATCHING INTERNAL COPING.
- MP9 SINGLE BURN 300 ALUM PLATE PANEL SYSTEM WITH MATCHING INTERNAL COPING.
- MP10 SINGLE BURN 300 ALUM PLATE PANEL SYSTEM WITH MATCHING INTERNAL COPING.
- MP11 SINGLE BURN 300 ALUM PLATE PANEL SYSTEM WITH MATCHING INTERNAL COPING.
- MP12 SINGLE BURN 300 ALUM PLATE PANEL SYSTEM WITH MATCHING INTERNAL COPING.
- MP13 SINGLE BURN 300 ALUM PLATE PANEL SYSTEM WITH MATCHING INTERNAL COPING.
- MP14 SINGLE BURN 300 ALUM PLATE PANEL SYSTEM WITH MATCHING INTERNAL COPING.
- MP15 SINGLE BURN 300 ALUM PLATE PANEL SYSTEM WITH MATCHING INTERNAL COPING.
- MP16 SINGLE BURN 300 ALUM PLATE PANEL SYSTEM WITH MATCHING INTERNAL COPING.
- MP17 SINGLE BURN 300 ALUM PLATE PANEL SYSTEM WITH MATCHING INTERNAL COPING.
- MP18 SINGLE BURN 300 ALUM PLATE PANEL SYSTEM WITH MATCHING INTERNAL COPING.
- MP19 SINGLE BURN 300 ALUM PLATE PANEL SYSTEM WITH MATCHING INTERNAL COPING.
- MP20 SINGLE BURN 300 ALUM PLATE PANEL SYSTEM WITH MATCHING INTERNAL COPING.
- MP21 SINGLE BURN 300 ALUM PLATE PANEL SYSTEM WITH MATCHING INTERNAL COPING.
- MP22 SINGLE BURN 300 ALUM PLATE PANEL SYSTEM WITH MATCHING INTERNAL COPING.
- MP23 SINGLE BURN 300 ALUM PLATE PANEL SYSTEM WITH MATCHING INTERNAL COPING.
- MP24 SINGLE BURN 300 ALUM PLATE PANEL SYSTEM WITH MATCHING INTERNAL COPING.
- MP25 SINGLE BURN 300 ALUM PLATE PANEL SYSTEM WITH MATCHING INTERNAL COPING.
- MP26 SINGLE BURN 300 ALUM PLATE PANEL SYSTEM WITH MATCHING INTERNAL COPING.
- MP27 SINGLE BURN 300 ALUM PLATE PANEL SYSTEM WITH MATCHING INTERNAL COPING.
- MP28 SINGLE BURN 300 ALUM PLATE PANEL SYSTEM WITH MATCHING INTERNAL COPING.
- MP29 SINGLE BURN 300 ALUM PLATE PANEL SYSTEM WITH MATCHING INTERNAL COPING.
- MP30 SINGLE BURN 300 ALUM PLATE PANEL SYSTEM WITH MATCHING INTERNAL COPING.
- MP31 SINGLE BURN 300 ALUM PLATE PANEL SYSTEM WITH MATCHING INTERNAL COPING.
- MP32 SINGLE BURN 300 ALUM PLATE PANEL SYSTEM WITH MATCHING INTERNAL COPING.
- MP33 SINGLE BURN 300 ALUM PLATE PANEL SYSTEM WITH MATCHING INTERNAL COPING.
- MP34 SINGLE BURN 300 ALUM PLATE PANEL SYSTEM WITH MATCHING INTERNAL COPING.
- MP35 SINGLE BURN 300 ALUM PLATE PANEL SYSTEM WITH MATCHING INTERNAL COPING.
- MP36 SINGLE BURN 300 ALUM PLATE PANEL SYSTEM WITH MATCHING INTERNAL COPING.
- MP37 SINGLE BURN 300 ALUM PLATE PANEL SYSTEM WITH MATCHING INTERNAL COPING.
- MP38 SINGLE BURN 300 ALUM PLATE PANEL SYSTEM WITH MATCHING INTERNAL COPING.
- MP39 SINGLE BURN 300 ALUM PLATE PANEL SYSTEM WITH MATCHING INTERNAL COPING.
- MP40 SINGLE BURN 300 ALUM PLATE PANEL SYSTEM WITH MATCHING INTERNAL COPING.
- MP41 SINGLE BURN 300 ALUM PLATE PANEL SYSTEM WITH MATCHING INTERNAL COPING.
- MP42 SINGLE BURN 300 ALUM PLATE PANEL SYSTEM WITH MATCHING INTERNAL COPING.
- MP43 SINGLE BURN 300 ALUM PLATE PANEL SYSTEM WITH MATCHING INTERNAL COPING.
- MP44 SINGLE BURN 300 ALUM PLATE PANEL SYSTEM WITH MATCHING INTERNAL COPING.
- MP45 SINGLE BURN 300 ALUM PLATE PANEL SYSTEM WITH MATCHING INTERNAL COPING.
- MP46 SINGLE BURN 300 ALUM PLATE PANEL SYSTEM WITH MATCHING INTERNAL COPING.
- MP47 SINGLE BURN 300 ALUM PLATE PANEL SYSTEM WITH MATCHING INTERNAL COPING.
- MP48 SINGLE BURN 300 ALUM PLATE PANEL SYSTEM WITH MATCHING INTERNAL COPING.
- MP49 SINGLE BURN 300 ALUM PLATE PANEL SYSTEM WITH MATCHING INTERNAL COPING.
- MP50 SINGLE BURN 300 ALUM PLATE PANEL SYSTEM WITH MATCHING INTERNAL COPING.
- MP51 SINGLE BURN 300 ALUM PLATE PANEL SYSTEM WITH MATCHING INTERNAL COPING.
- MP52 SINGLE BURN 300 ALUM PLATE PANEL SYSTEM WITH MATCHING INTERNAL COPING.
- MP53 SINGLE BURN 300 ALUM PLATE PANEL SYSTEM WITH MATCHING INTERNAL COPING.
- MP54 SINGLE BURN 300 ALUM PLATE PANEL SYSTEM WITH MATCHING INTERNAL COPING.
- MP55 SINGLE BURN 300 ALUM PLATE PANEL SYSTEM WITH MATCHING INTERNAL COPING.
- MP56 SINGLE BURN 300 ALUM PLATE PANEL SYSTEM WITH MATCHING INTERNAL COPING.
- MP57 SINGLE BURN 300 ALUM PLATE PANEL SYSTEM WITH MATCHING INTERNAL COPING.
- MP58 SINGLE BURN 300 ALUM PLATE PANEL SYSTEM WITH MATCHING INTERNAL COPING.
- MP59 SINGLE BURN 300 ALUM PLATE PANEL SYSTEM WITH MATCHING INTERNAL COPING.
- MP60 SINGLE BURN 300 ALUM PLATE PANEL SYSTEM WITH MATCHING INTERNAL COPING.
- MP61 SINGLE BURN 300 ALUM PLATE PANEL SYSTEM WITH MATCHING INTERNAL COPING.
- MP62 SINGLE BURN 300 ALUM PLATE PANEL SYSTEM WITH MATCHING INTERNAL COPING.
- MP63 SINGLE BURN 300 ALUM PLATE PANEL SYSTEM WITH MATCHING INTERNAL COPING.
- MP64 SINGLE BURN 300 ALUM PLATE PANEL SYSTEM WITH MATCHING INTERNAL COPING.
- MP65 SINGLE BURN 300 ALUM PLATE PANEL SYSTEM WITH MATCHING INTERNAL COPING.
- MP66 SINGLE BURN 300 ALUM PLATE PANEL SYSTEM WITH MATCHING INTERNAL COPING.
- MP67 SINGLE BURN 300 ALUM PLATE PANEL SYSTEM WITH MATCHING INTERNAL COPING.
- MP68 SINGLE BURN 300 ALUM PLATE PANEL SYSTEM WITH MATCHING INTERNAL COPING.
- MP69 SINGLE BURN 300 ALUM PLATE PANEL SYSTEM WITH MATCHING INTERNAL COPING.
- MP70 SINGLE BURN 300 ALUM PLATE PANEL SYSTEM WITH MATCHING INTERNAL COPING.
- MP71 SINGLE BURN 300 ALUM PLATE PANEL SYSTEM WITH MATCHING INTERNAL COPING.
- MP72 SINGLE BURN 300 ALUM PLATE PANEL SYSTEM WITH MATCHING INTERNAL COPING.
- MP73 SINGLE BURN 300 ALUM PLATE PANEL SYSTEM WITH MATCHING INTERNAL COPING.
- MP74 SINGLE BURN 300 ALUM PLATE PANEL SYSTEM WITH MATCHING INTERNAL COPING.
- MP75 SINGLE BURN 300 ALUM PLATE PANEL SYSTEM WITH MATCHING INTERNAL COPING.
- MP76 SINGLE BURN 300 ALUM PLATE PANEL SYSTEM WITH MATCHING INTERNAL COPING.
- MP77 SINGLE BURN 300 ALUM PLATE PANEL SYSTEM WITH MATCHING INTERNAL COPING.
- MP78 SINGLE BURN 300 ALUM PLATE PANEL SYSTEM WITH MATCHING INTERNAL COPING.
- MP79 SINGLE BURN 300 ALUM PLATE PANEL SYSTEM WITH MATCHING INTERNAL COPING.
- MP80 SINGLE BURN 300 ALUM PLATE PANEL SYSTEM WITH MATCHING INTERNAL COPING.
- MP81 SINGLE BURN 300 ALUM PLATE PANEL SYSTEM WITH MATCHING INTERNAL COPING.
- MP82 SINGLE BURN 300 ALUM PLATE PANEL SYSTEM WITH MATCHING INTERNAL COPING.
- MP83 SINGLE BURN 300 ALUM PLATE PANEL SYSTEM WITH MATCHING INTERNAL COPING.
- MP84 SINGLE BURN 300 ALUM PLATE PANEL SYSTEM WITH MATCHING INTERNAL COPING.
- MP85 SINGLE BURN 300 ALUM PLATE PANEL SYSTEM WITH MATCHING INTERNAL COPING.
- MP86 SINGLE BURN 300 ALUM PLATE PANEL SYSTEM WITH MATCHING INTERNAL COPING.
- MP87 SINGLE BURN 300 ALUM PLATE PANEL SYSTEM WITH MATCHING INTERNAL COPING.
- MP88 SINGLE BURN 300 ALUM PLATE PANEL SYSTEM WITH MATCHING INTERNAL COPING.
- MP89 SINGLE BURN 300 ALUM PLATE PANEL SYSTEM WITH MATCHING INTERNAL COPING.
- MP90 SINGLE BURN 300 ALUM PLATE PANEL SYSTEM WITH MATCHING INTERNAL COPING.
- MP91 SINGLE BURN 300 ALUM PLATE PANEL SYSTEM WITH MATCHING INTERNAL COPING.
- MP92 SINGLE BURN 300 ALUM PLATE PANEL SYSTEM WITH MATCHING INTERNAL COPING.
- MP93 SINGLE BURN 300 ALUM PLATE PANEL SYSTEM WITH MATCHING INTERNAL COPING.
- MP94 SINGLE BURN 300 ALUM PLATE PANEL SYSTEM WITH MATCHING INTERNAL COPING.
- MP95 SINGLE BURN 300 ALUM PLATE PANEL SYSTEM WITH MATCHING INTERNAL COPING.
- MP96 SINGLE BURN 300 ALUM PLATE PANEL SYSTEM WITH MATCHING INTERNAL COPING.
- MP97 SINGLE BURN 300 ALUM PLATE PANEL SYSTEM WITH MATCHING INTERNAL COPING.
- MP98 SINGLE BURN 300 ALUM PLATE PANEL SYSTEM WITH MATCHING INTERNAL COPING.
- MP99 SINGLE BURN 300 ALUM PLATE PANEL SYSTEM WITH MATCHING INTERNAL COPING.
- MP100 SINGLE BURN 300 ALUM PLATE PANEL SYSTEM WITH MATCHING INTERNAL COPING.

NOTES:

- SEE "HATCH" EXPANSION JOINT.
- SEE "HATCH" EXPANSION JOINT.
- FOR WINDOW ELEVATIONS SEE SHEET A2.1.

HATCH LEGEND

MSD	MP2	STACKED BOARD
MS3	MP3	RUNNING BOARD
GL1	GTU	CMU

HASTINGS

ARCHITECTURE • INTERIORS
PLANNING • SUSTAINABILITY

225 POLK AVENUE SUITE 100
NASHVILLE, TN 37203
p 615.259.1999

www.hastingsarchitecture.com
© 2019



CONSTRUCTION DOCUMENTS

AMG 805 LEA, LLC

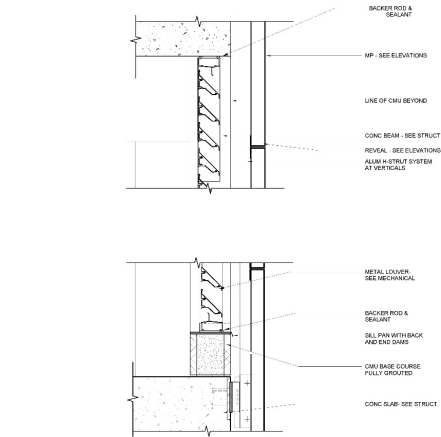
805 LEA
805 LEA AVENUE | NASHVILLE | TENNESSEE | 37201

REVISION INFORMATION
6 ASB 1 2019.06.25

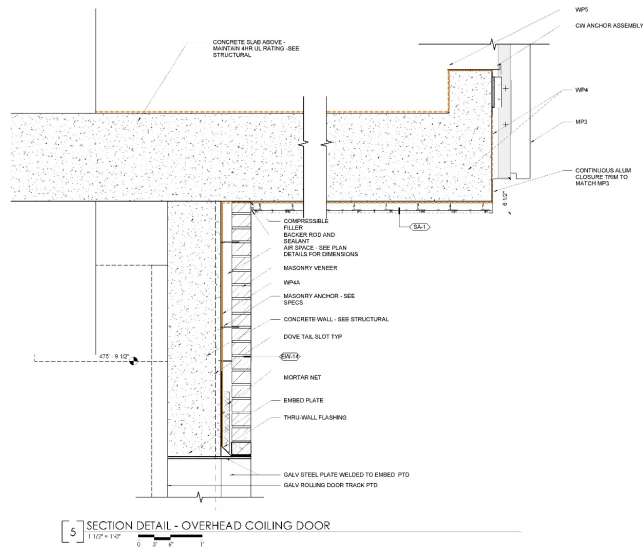
17024 2019.06.28

ENLARGED ELEVATIONS - WEST UPPER

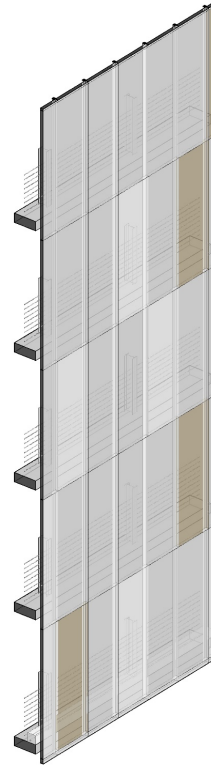
A2.11



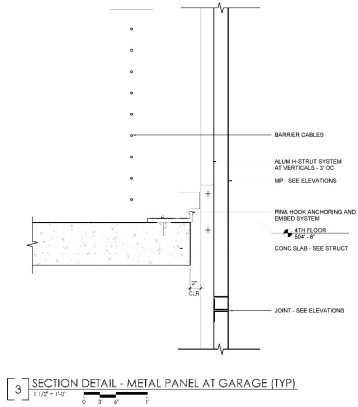
6 SECTION DETAIL - LOUVER @ PERF MP
1 1/2" = 1'-0"



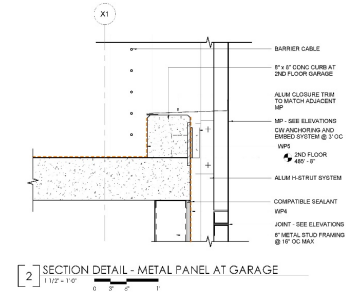
5 SECTION DETAIL - OVERHEAD COILING DOOR
1 1/2" = 1'-0"



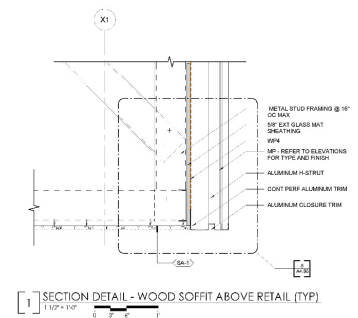
4 AXON - GARAGE CLADDING SYSTEM
NTS - FOR REFERENCE ONLY



3 SECTION DETAIL - METAL PANEL AT GARAGE (TYP)
1 1/2" = 1'-0"



2 SECTION DETAIL - METAL PANEL AT GARAGE
1 1/2" = 1'-0"



1 SECTION DETAIL - WOOD SOFFIT ABOVE RETAIL (TYP)
1 1/2" = 1'-0"

HASTINGS

ARCHITECTURE • INTERIORS
PLANNING • SUSTAINABILITY

225 POLK AVENUE SUITE 100
NASHVILLE, TN 37203
P 615.329.1399

www.hastingsarchitecture.com
© 2019



CONSTRUCTION
DOCUMENTS

AMG 805 LEA, LLC

805 LEA
805 LEA AVENUE | NASHVILLE | TENNESSEE | 37201

REVISION INFORMATION
4 Addendum 1 2019.07.17

17024 2019.06.28

SECTION DETAILS @
GARAGE - NORTH &
SOUTH

A4.61



Search BIM objects, categories or brands



Filter products

Brands (46)

BIM object categories (22)

File types (25)

Regions (8)

Types (5)

Walls

[Cladding](#)[Cubicals](#)[Curtain wall ▾](#)[External Walls](#)[Folding Walls](#)[+ See more](#)

Properties

Thickness

Application

Light Transmission

Depth

Frame Depth

Height

Width

Hourly Rating

Accessory Type

More filter options

Materials (16)

Masterformat (35)

Omniclass (37)

Uniformat (7)



417 product families 46 brands

BIM object categories: Curtain wall ▾

Reset filters



Trigon FS

HUECK

System FC - Semi
Structural Glazing
Curtain Wall

SOSOARES

System FC -
Structural Glazing
Curtain Wall

SOSOARES

Curtain Wall -
KADRILLE AA100
50mm Cascade

Kawneer France

Curtain wall -
KADRILLE AA100
50mm Drainage by

Kawneer France

Curtain Wall -
KADRILLE AA100
50mm Dual Colour

Kawneer France

Curtain Wall -
KADRILLE AA100
50mm Horizontal

Kawneer France

Curtain Wall -
KADRILLE AA100
50mm SSG

Kawneer France

Curtain Wall -
KADRILLE AA100
65mm Cascade

Kawneer France

Curtain Wall -
KADRILLE AA110
65mm Drainage by

Kawneer France

Curtain Wall -
KADRILLE AA110
65mm Dual Color

Kawneer France

Curtain Wall -
KADRILLE AA110
65mm SSG

Kawneer France

Door - KADRILLE
1202

Kawneer France

Frame Window -
KADRILLE 1202

Kawneer France

French Window -
KADRILLE 1202

Kawneer France

Railing - KADRILLE
1202

Kawneer France

Sliding Door -
KADRILLE 1202

Kawneer France

Strip Window -
KADRILLE 1202

Kawneer France

Tilt-Turn Window -
KADRILLE 1202

Kawneer France

Top Hung Pivoting
Window - KADRILLE
1202

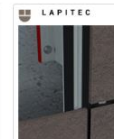
Kawneer France

Mirage Closed joint
Façade

Mirage

Danpal Façade
System

Danpal

Alutech ALT.F50
Integrated doorsALUTECH Group of
CompaniesLAPITEC CURTAIN
WALL

Lapitec

GRIDLOCK® - Snap-
In Glass Block
SystemEXTECH Exterior
Technologies, Inc.LIGHTWALL 3000®
CURTAIN WALL -
Glass andEXTECH Exterior
Technologies, Inc.LIGHTWALL
3100LS® - Glass
and PolycarbonateEXTECH Exterior
Technologies, Inc.LIGHTWALL 3440®
Polycarbonate Wall -
InterlockingEXTECH Exterior
Technologies, Inc.Schüco Façade AOC
50 TI

Schüco

Schüco Façade AOC
60 ST

Schüco

Schüco Façade AOC
60 TI

Schüco

Alutech ALT.F50
Curtain wallALUTECH Group of
CompaniesAlutech ALT.F50
Integrated windowsALUTECH Group of
CompaniesTranzform® Sound
Accordion Partitions

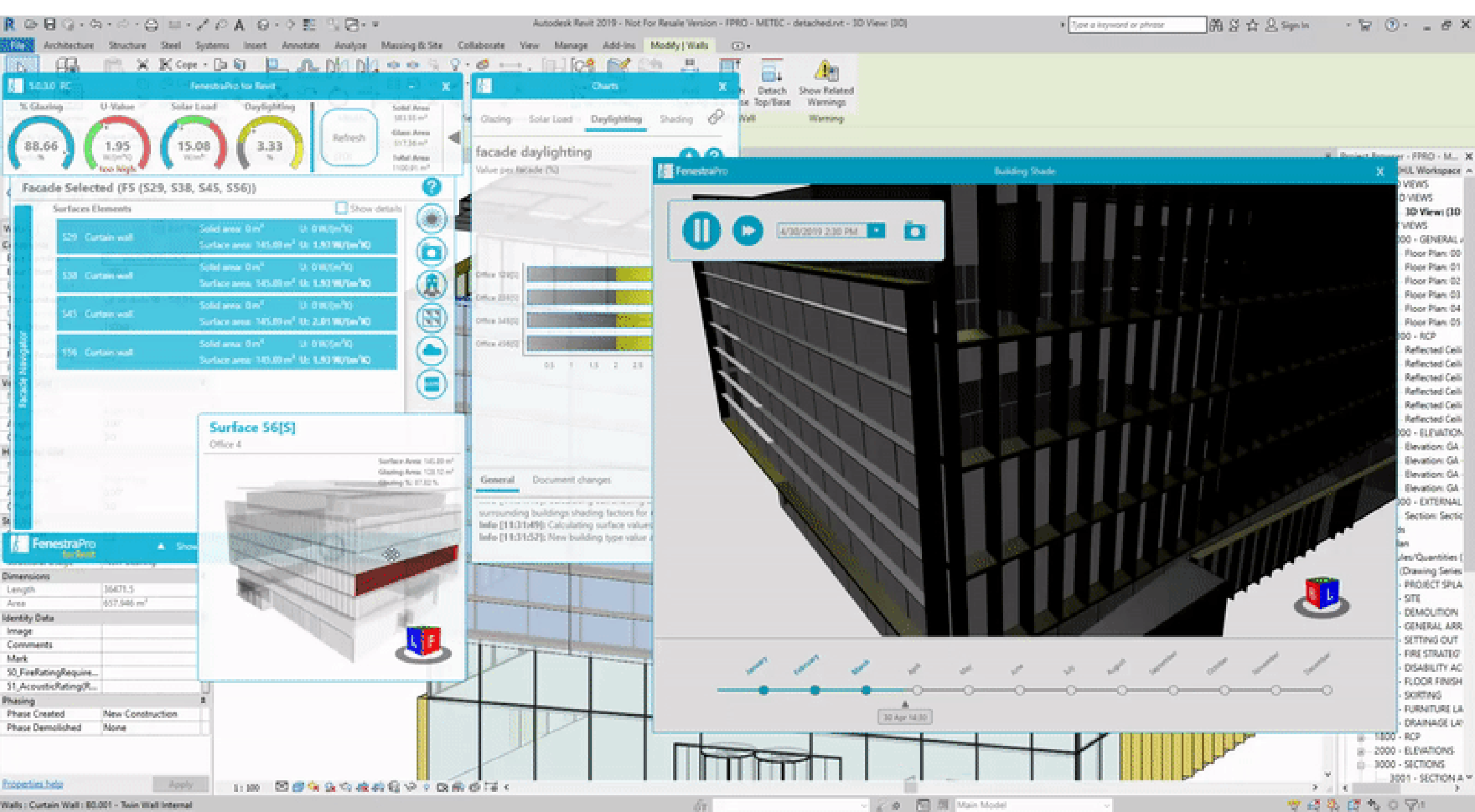
The Cookson Company

Tranzform® Space
Accordion Partitions

The Cookson Company

Tanagra Curtain
Wall - Grid

Profilis Systèmes



Properties {3D}

3D View: {3D} Edit Type

Graphics

View Scale	Custom
Scale Value	1: 100
Detail Level	Fine
Parts Visibility	Show Original
Visibility/Graphic Display	Edit...
Discipline	Architectural
Show Hidden	By Discipline
Default Analysis Discipline	FP_HeatGain
Analysis Display	Edit...
Sun Path	<input type="checkbox"/>

Extents

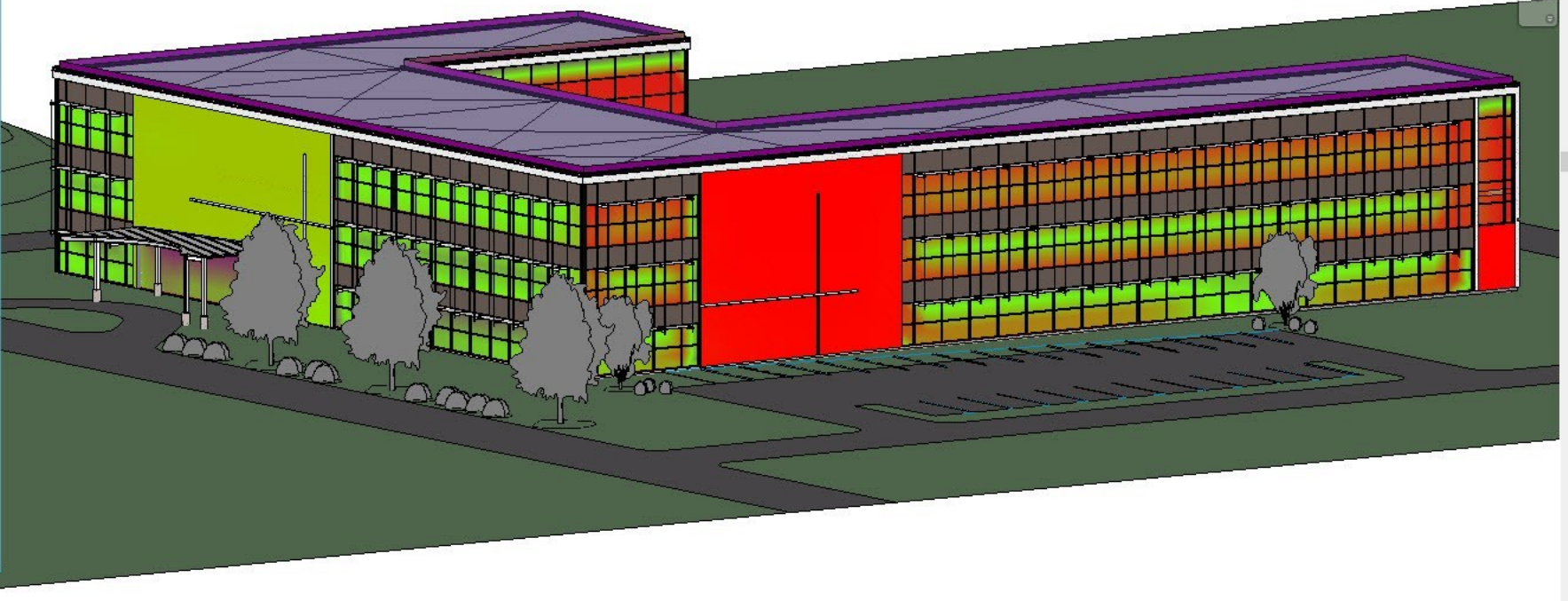
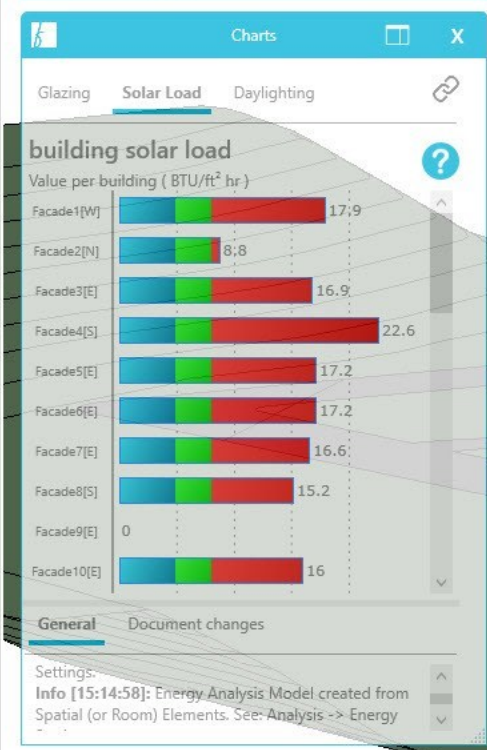
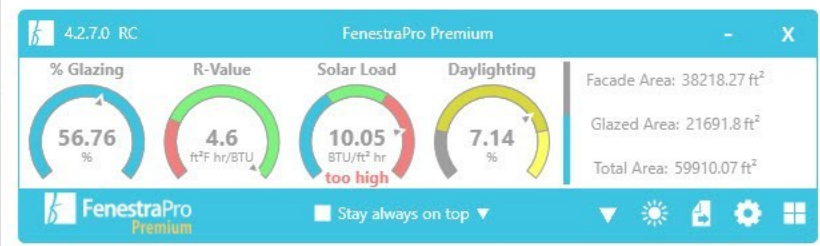
Crop View ☐

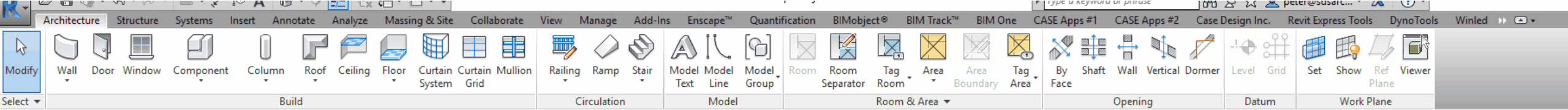
Crop Region ☐

Properties help Apply

Project Browser - Sample Model Imperial

- Views (all)
- Floor Plans
 - 01 - Entry Level
 - 02 - Floor
 - 03 - Floor
 - Roof
 - Site
- Ceiling Plans
 - 01 - Entry Level
 - 02 - Floor
 - 03 - Floor
 - Roof
- 3D Views
 - 03 - Floor Public - Day Re
 - 03 - Floor Public - Night I
 - 3D Energy Model
 - _InsightLighting Model Vi
 - Balcony View
 - Building Courtyard
 - From Parking Area
 - (3D)





Properties

3D View

3D View: {3D}

Graphics

View Scale	1 : 100
Scale Value	100
Detail Level	Fine
Parts Visibility	Show Original
Visibility/Graphics Overrides	Edit...
Graphic Display Options	Edit...
Discipline	Architectural
Show Hidden Lines	By Discipline
Default Analysis Display Style	None
Sun Path	<input type="checkbox"/>

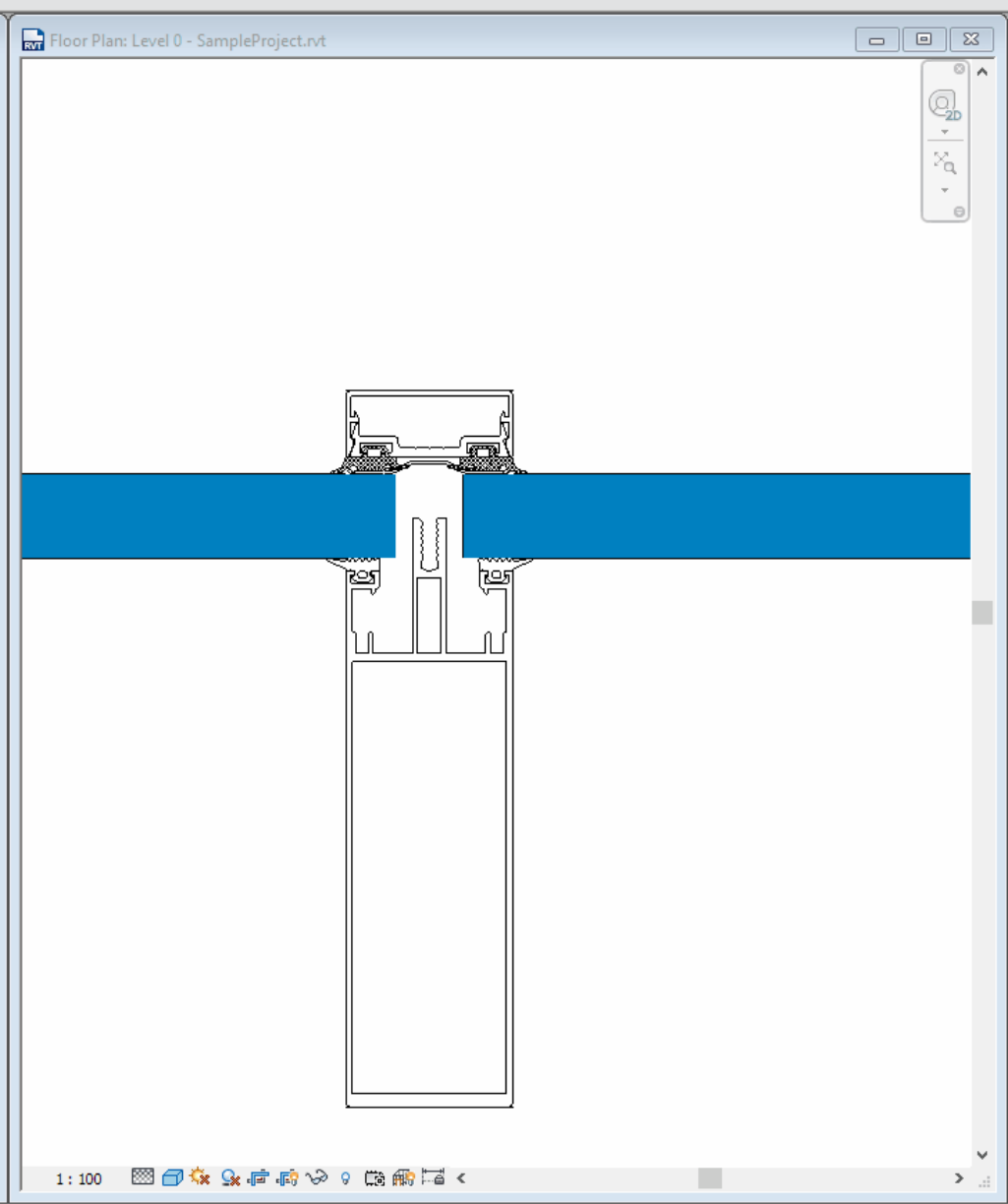
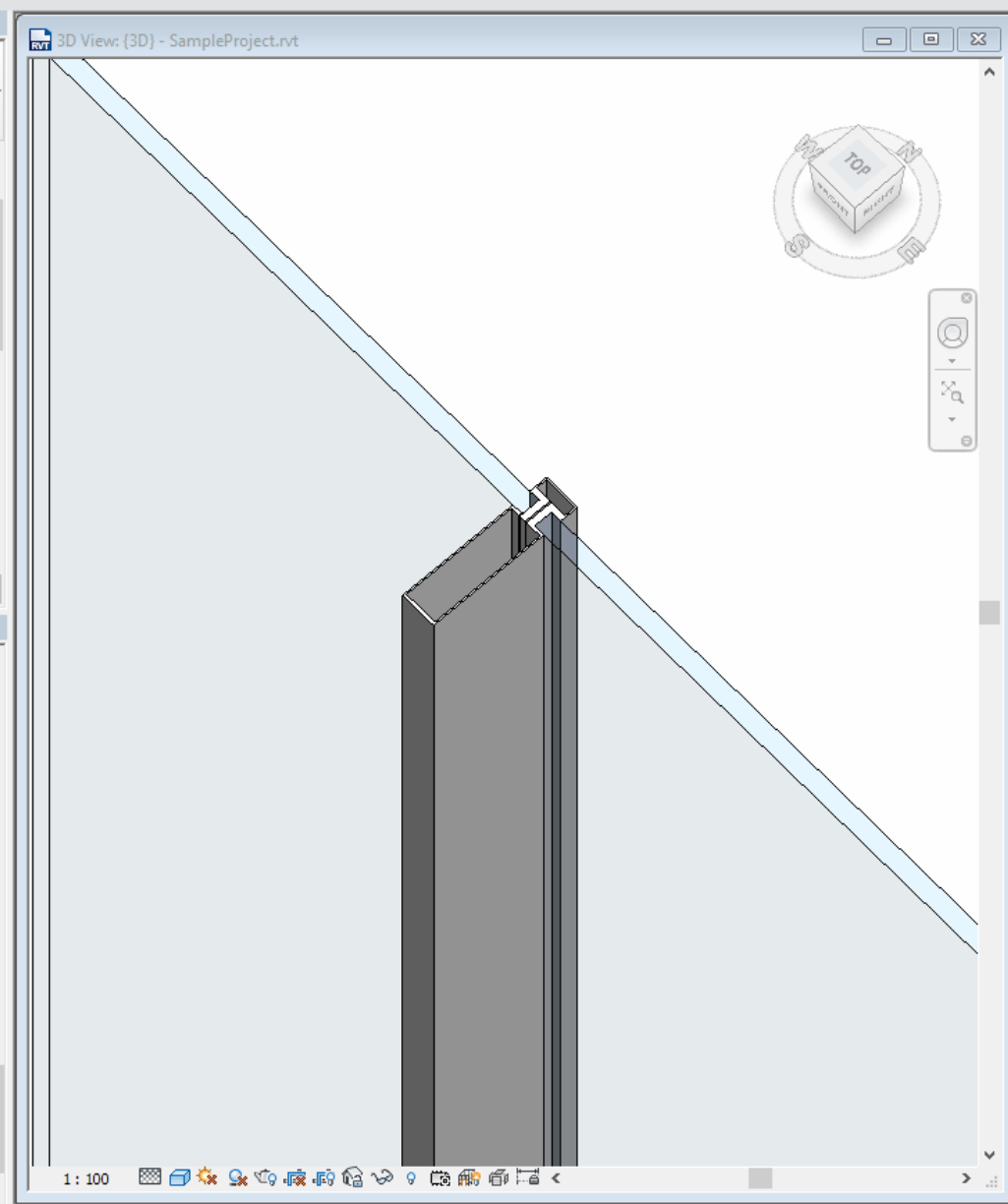
Extents

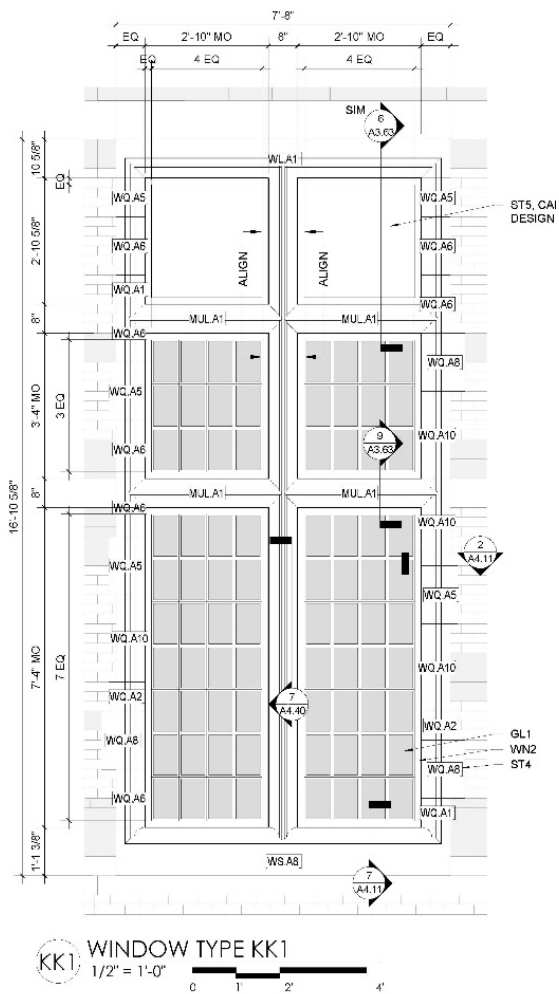
Crop View	<input type="checkbox"/>
Crop Region Visible	<input type="checkbox"/>
Annotation Crop	<input type="checkbox"/>
Far Clip Active	<input type="checkbox"/>

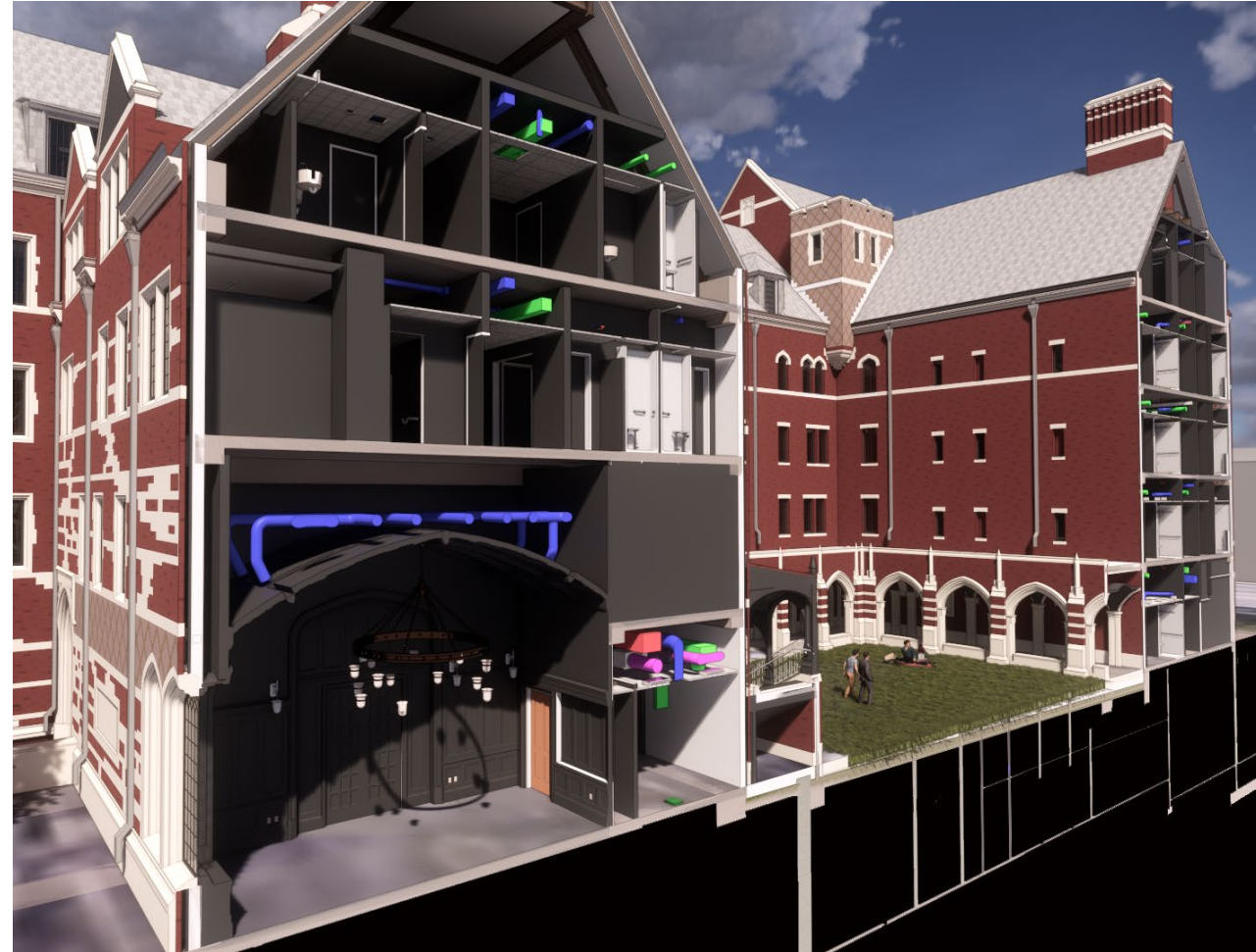
Apply

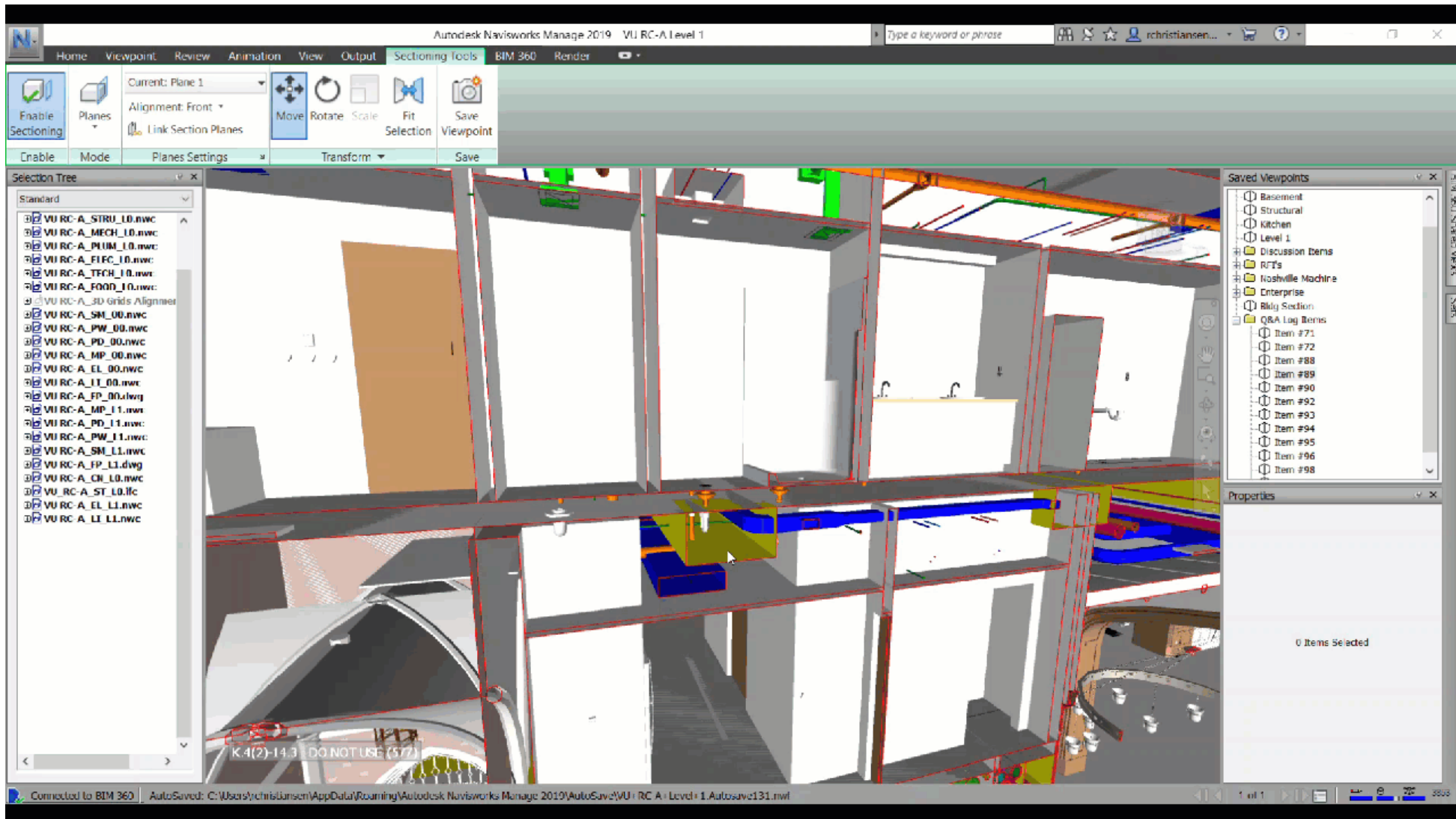
Project Browser - SampleProject.rvt

- Profiles_Handrail_Circular
- Profiles_Handrail_Elliptical
- Profiles_Handrail_Rectangular
- Profiles_Handrail_Square
- Profiles_Reveal_Brick_Course
- Profiles_Slab_Edge_Thickened
- Profiles_Slab_Metal_Deck_Corus_ComFlor_51
- Profiles_Stair_Nosing_Pan
- Profiles_Stair_Nosing_Radius
- Profiles_Stair_Tread
- SampleMullionProfileFamily
 - SampleAssembly
- Railings
- Ramps
- Roofs
- Stairs
- Structural Beam Systems
- Structural Columns
- Structural Foundations
- Structural Framing
- Walls
- Windows









Glazier Focus: Productivity & Professionalism

- Describe how these growing technologies and approaches can help push glaziers to a new level of productivity and professionalism.

Technology Misconceptions

- List some of the misunderstandings and misconceptions of the technologies currently in use.

Challenges of Daily Business

- Inform ways to mitigate the potential challenges of implementing new technology into daily glazing business.

Q&A

THANK YOU

Navigating the Technology Landscape



Nick Bagatelos
*Bagatelos Architectural
Systems*



David Bailey
Hastings Architecture



James Smith
*Consolidated
Glass Holdings*



Max Perilstein
*Sole Source
Consultants*